



# AC1750 Wireless Dual Band Gigabit Router

1750Mbps Wi-Fi Speed  
for Home Entertainment

Archer C8



450Mbps + 1300Mbps  
Dual Band Wi-Fi



Beamforming Technology  
for Better Coverage



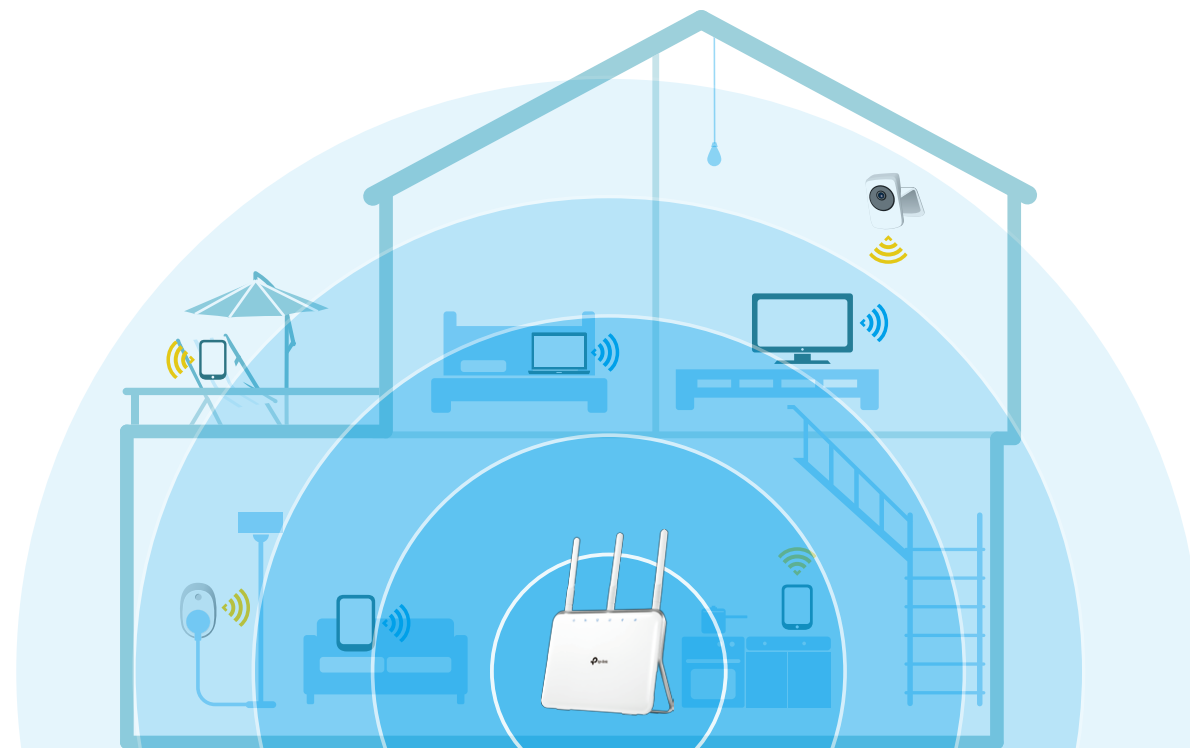
USB 3.0 Port

# Highlights

## Faster, More Reliable Wi-Fi

The Archer C8 covers your home with fast dual band Wi-Fi. The strong 2.4GHz (450Mbps) Wi-Fi band is perfect for sending emails, browsing the web, and listening to music. The 5GHz band reaches 1300Mbps so you can game and stream in HD at the same time without interruption.

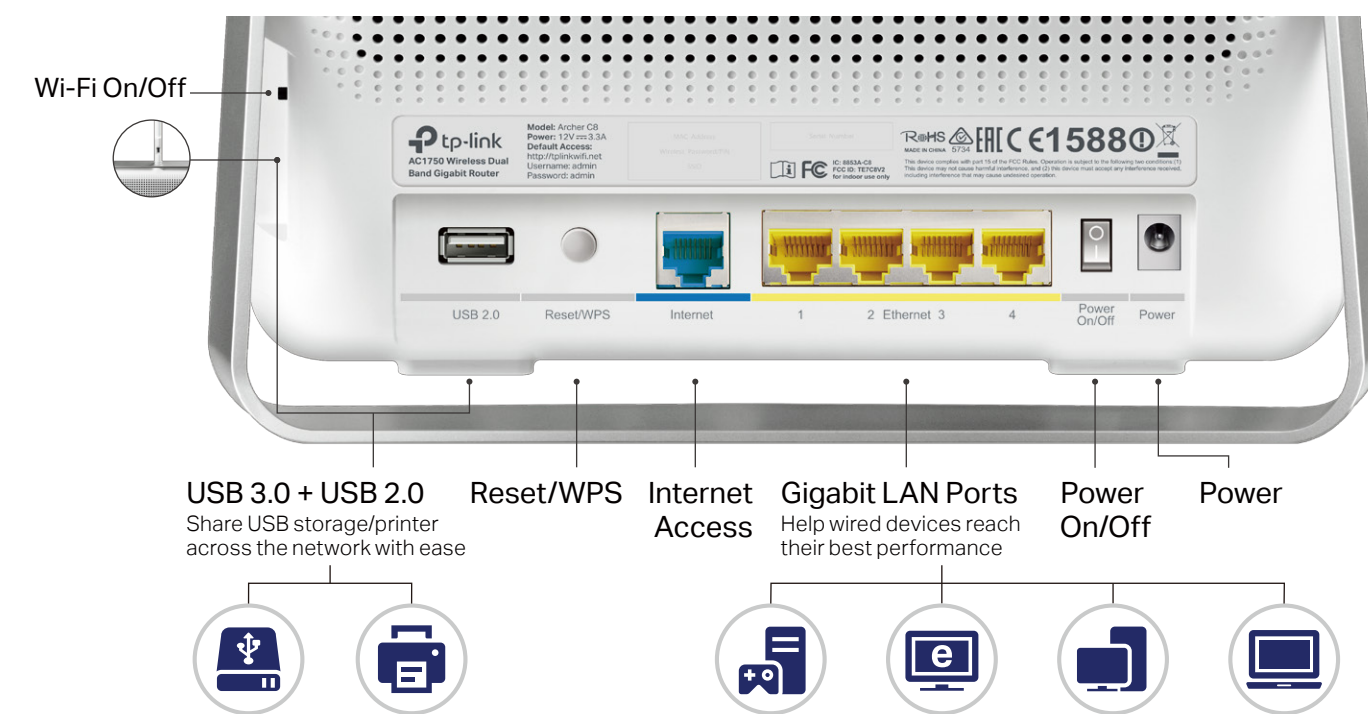
- 2.4GHz 600Mbps
- 5GHz 1300Mbps



## Powerful Connections

The Archer C8's USB 3.0 port runs 10× faster than USB 2.0 for data transfers at lightning speed. Connect a printer to the 2.0 port and external drive to the 3.0 port to easily share a printer, files, photos, music and videos across your network.

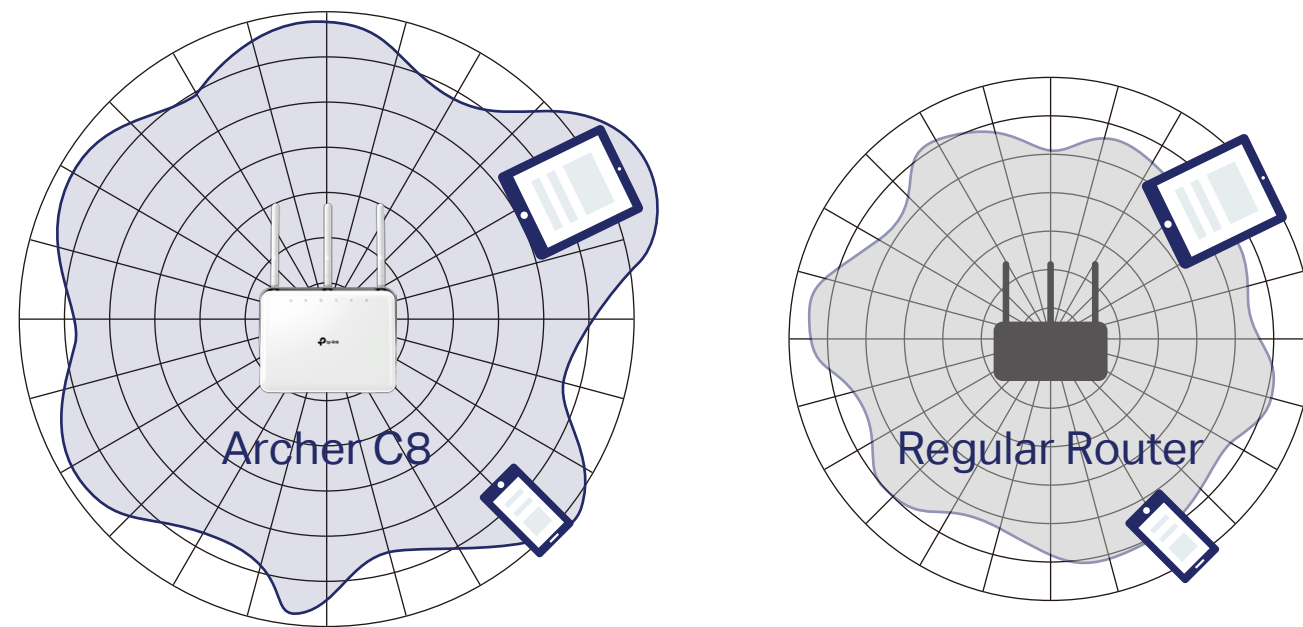
Achieve peak performance with your wired devices through four Gigabit Ethernet ports that can operate 10× faster than standard Ethernet.



# Highlights

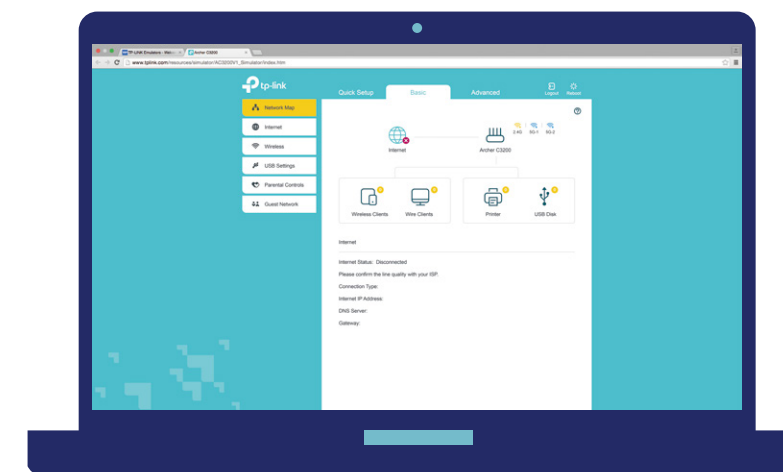
## Beamforming for Better Coverage

Beamforming detects the location of your connected devices and concentrates the Archer C8's Wi-Fi towards them to create stronger overall connections.

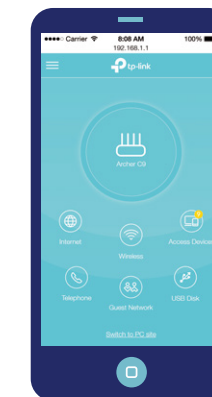


## Easy Setup and Use

Installation is simple, thanks to an intuitive web interface and the powerful TP-Link app, Tether.



Intuitive Web Interface



TP-Link  
Tether

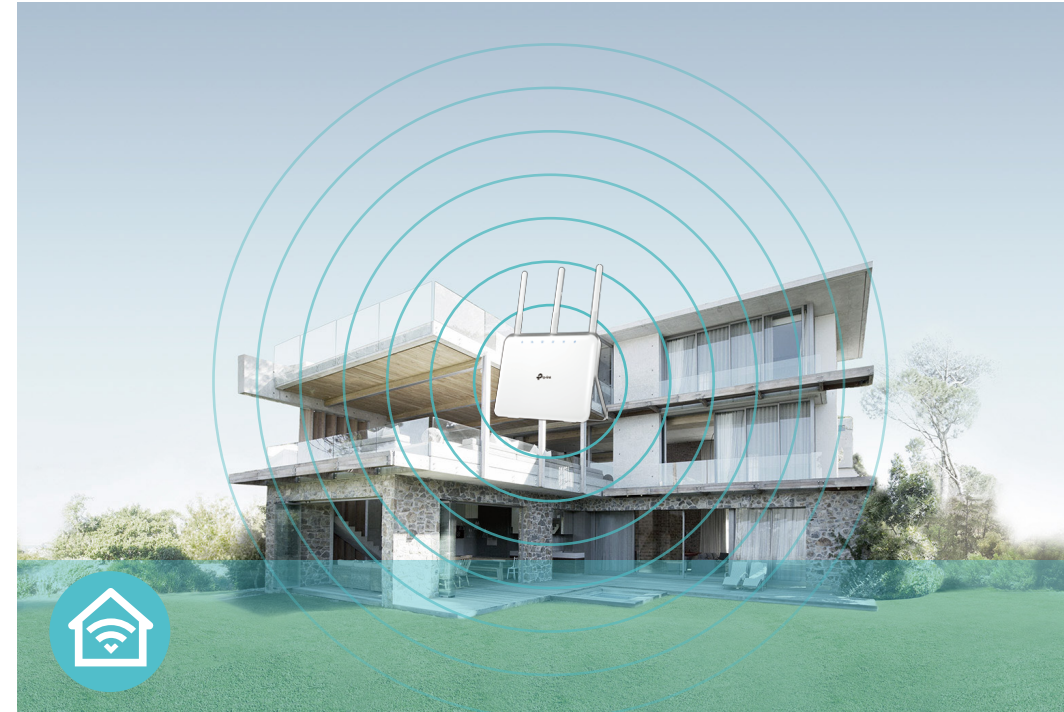


# Features



## Speed

- **Ultimate Wireless Speed** – Combined wireless speeds up to 450Mbps over 2.4GHz and 1300Mbps over 5GHz
- **Support 802.11 ac** – Provides a data transfer rate 3 times faster than 802.11n for each stream
- **Dual-core CPU** – 800MHz dual-core CPU functions as a great 'heart' for fast, stable and responsive performance with Wi-Fi, Ethernet and USB devices



## Wi-Fi Range

- **Ultimate Range Wi-Fi** – 3 dual band high-performance antennas with a high-powered amplifier ensure the widespread Wi-Fi coverage and a stable connection
- **Wi-Fi with Beamforming** – Beamforming technology locates the connected devices and further improves the Archer C8's range and the signal strength to each mobile device, delivering a more reliable and efficient wireless connection



## Reliability

- **Simultaneous Dual Band** – Separate Wi-Fi bands enable more devices to connect to your network without a drop in performance
- **Easy Bandwidth Management** – Advanced QoS makes it easier for you to manage the bandwidth of connected devices



# Features



## Ease of Use

- Intuitive Web UI – Ensures quick and simple Installation without hassle
- Fast Encryption – One-touch WPA wireless security encryption with the WPS button
- Easy On/Off – Turn on/off wireless radio using the Wi-Fi On/Off button
- Power On/Off – Conveniently power on or off your router as required
- Hassle-free Management with Tether App – Network management is made easy with the TP-Link Tether App, available on any Android and iOS device
- Online Upgrade – Keeps you informed of the latest firmware and allows online upgrade on the web UI



## Security

- Guest Network – Keeps your main network secure by creating a separate network for friends and visitors
- Access Control – Establish a whitelist or blacklist to allow or restrict certain devices to access the Internet
- Parental Controls – Restrict Internet access time and contents for children devices
- VPN Server – PPTP VPN and OpenVPN are supported, making it easy to set up a secure connection between your private network and the internet
- Encryptions for Secure Network – WPA-PSK and WPA2-PSK encryptions provide active protection against security threats



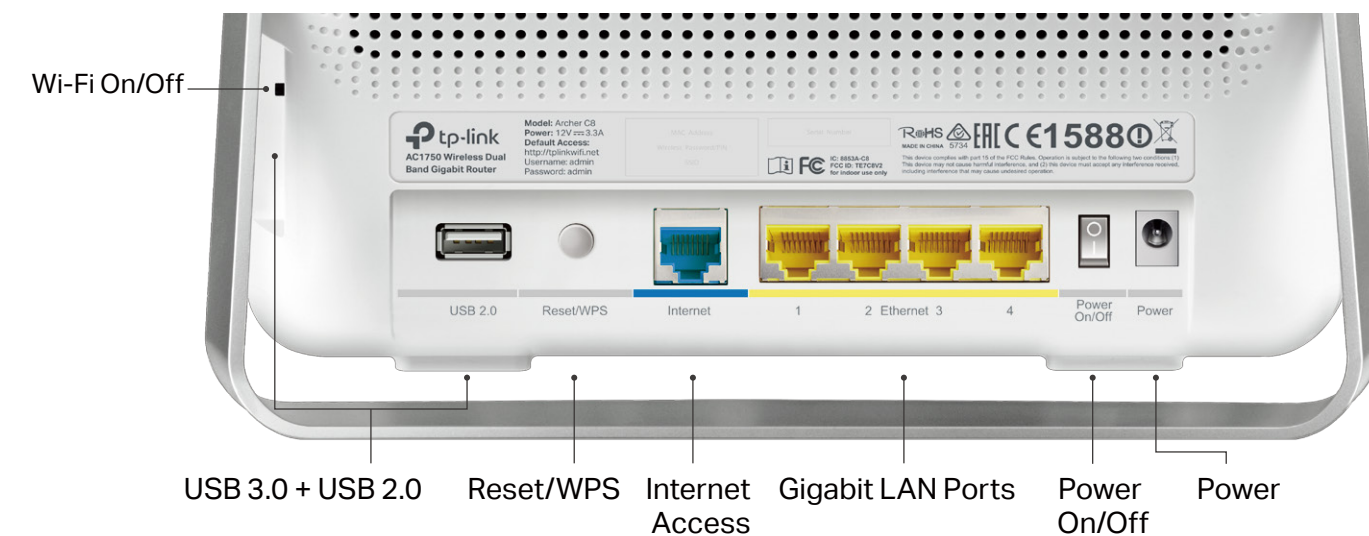
## Easy Sharing

- Dual USB Ports for Fast Sharing – With one ultra-fast USB 3.0 port and one USB 2.0 port, you can access and share a printer as well as your files and media locally. Through the router's FTP server, you can also access your files and media from network devices remotely
- 10x Faster Transfer Speed – The USB 3.0 port provides up to 10x faster USB hard drive access than previous generation USB 2.0 connections
- Built-in Print Server – Allows wireless printing from multiple computers (works in conjunction with a USB printer)
- Built-in Media Server – Allows you to play music, watch videos and view photos from any device on your network
- Built-in Time Machine – Regularly backs up all the files on your Macbook to a USB storage device connected to the router

# Specifications

## Hardware

- Ethernet Ports: 4 10/100/1000Mbps LAN Ports, 1 10/100/1000Mbps WAN Port
- USB Ports: 1 USB 3.0 Port, 1 USB 2.0 Port
- Buttons: Wi-Fi On/Off Button, Power On/Off Button, Reset/WPS Button
- Antennas: 3 Dual Band Detachable Antennas
- External Power Supply: 12V/2.5A (US version), 12V/2A (EU version)
- Dimensions (W x D x H): 8.7×3.4×6.6 in. (221×86×168.5mm)



## Wireless

- Wireless Standards: IEEE 802.11ac/n/a 5GHz, IEEE 802.11b/g/n 2.4GHz
- Frequency: 2.4GHz and 5GHz
- Signal Rate: 1300Mbps at 5GHz, 450Mbps at 2.4GHz
- Transmit Power:
  - CE: <20dBm(2.4GHz), <23dBm(5GHz);
  - FCC: <30dBm(2.4GHz & 5GHz)
- Reception Sensitivity:
  - 5GHz:
    - 11a 6Mbps: -93dBm, 11a 54Mbps: -75dBm
    - 11ac 20Mbps: -67dBm, 11ac 40Mbps: -63dBm
    - 11ac 80Mbps: -60dBm
  - 2.4GHz:
    - 11g 54M: -76dBm
    - 11n 20Mbps: -73dBm, 11n 40Mbps: -71dBm
- Wireless Function: Enable/Disable Wireless Radio, WDS Bridge, WMM, Wireless Statistics
- Wireless Security: 64/128-bit WEP, WPA/WPA2, WPA-PSK/WPA2-PSK encryptions



# Specifications

## Software

- Quality of Service: WMM, Bandwidth Control
- WAN Type: Dynamic IP/Static IP/PPPoE/PPTP(Dual Access)/L2TP(Dual Access)/BigPond
- Management: Access Control, Local Management, Remote Management
- DHCP: Server, DHCP Client List, Address Reservation
- Port Forwarding: Virtual Server, Port Triggering, UPnP, DMZ
- Dynamic DNS: DynDns, NO-IP, TP-Link
- VPN Server: PPTP, OpenVPN
- Access Control: Parental Controls, Local Management Control, Host List, White List, Black List
- Firewall Security: DoS, SPI Firewall, IP and MAC Address Binding
- Protocols: IPv4, IPv6
- USB Sharing: Supports Samba(Storage)/FTP Server/Media Server/Printer Server, Time Machine
- Guest Network: 2.4GHz guest network x 1, 5GHz guest network x 1

## Others

- Certification:  
CE, FCC, RoHS
- System Requirements:  
Microsoft Windows 98SE/NT/2000/XP/Vista™/7/8/8.1/10, MAC OS, NetWare, UNIX or Linux  
Internet Explorer 11, Firefox 12.0, Chrome 20.0, Safari 4.0, or other Java-enabled browser  
Cable or DSL Modem  
Subscription with an Internet Service Provider (for Internet access)
- Environment:  
Operating Temperature: 0°C~40°C (32°F ~104°F)  
Storage Temperature: -40°C~70°C (-40°F ~158°F)  
Operating Humidity: 10%~90% non-condensing  
Storage Humidity: 5%~90% non-condensing
- Package Contents  
AC1750 Wireless Dual Band Gigabit Router Archer C8  
3 detachable antennas  
Power Supply Unit  
Ethernet Cable  
Quick Installation Guide



For more information, please visit

<http://www.tp-link.com/en/products/details/Archer-C8.html>

or scan the QR code left

Attention: This device may only be used indoors in all EU member states and EFTA countries.

Specifications are subject to change without notice. TP-Link is a registered trademark of TP-Link Technologies Co., Ltd. Other brands and product names are trademarks or registered trademarks of their respective holders. Copyright ©2016 TP-Link Technologies Co., Ltd. All rights reserved.

TP-Link Technologies Co., Ltd.

Building 24 (floors 1, 3, 4, 5) and 28 (floors 1-4) Central Science and Technology Park, Shennan Rd, Nanshan, Shenzhen, China

[www.tp-link.com](http://www.tp-link.com)

[www.tp-link.com](http://www.tp-link.com)

TP-Link AC1750 Wireless Dual Band Gigabit Router Archer C8